



**INNOVATION  
COMES AFTER  
OBJECTIONS**



**MECH HEART MACHINERIES PRIVATE LIMITED**

134, Gajanan Industrial Hub, B/H Matrix Plaza Complex,

Phase-4, GIDC Vatva Ahmedab-382445 Gujrat, India.

Email ID: [mechheart03@gmail.com](mailto:mechheart03@gmail.com), Contact No.: +91 90333 72386, +91 9054880337



## PRODUCT RANGE

- Hydraulic Baling Press for Small Bags
- Hydraulic Baling Press for FIBC / Jumbo Bags
- Hydraulic Baling Press for Plastic & Paper Waste
- Hydraulic Cheese Pipe Straightener
- Granule Mixer
- Hot Air Dryer
- Hopper Loader
- Gravimetric Mixer
- Granule Mixer with Hot Air Dryer
- Online Pipe Cleaning Machine (Upgrade Model)



## GRANULE MIXER WITH HOT AIR DRYER

- Structure Body : Made of M.S. Heavy Gauge Sheet, 3mm
- Structure Pillar : Made of Heavy C – Section (75 X 40 X 5mm)
- Shaft Rotation on : SKF Taper roller and Ball Bearings
- Gearbox Type : Worm Gear Box for Reduction Speed
- Mixing Type : Up and Down of Granules While rotate shaft
- Heater type : Fin Heater, 1.5 KW
- Heating Control : By PID and Temperature Controller
- Air Inlet : By High speed Blower
- Granule Inlet : By Hopper top side of Mixer
- Granule Outlet : Bottom side of Mixer, Sliding Gate Provision



TANK CAPACITY	100 KGS	150 KGS	200 KGS	250 KGS
MOTOR CAPACITY	2 HP	3 HP	5 HP	7.5 HP
BLOWER	1 HP	1 HP	2 HP	2 HP
QTY OF HEATER	04 NOS.	06 NOS.	06 NOS.	08 NOS.

## HOT AIR DRYER

Tank Size	100 Kgs for Plastic Granules
Main Structure Body	Made of Heavy M.S. Sheet, 3mm
Structure Pillar	Made of Heavy Angle (50 x 50 x 5mm)
Blower Motor	1 HP, Foot Mount, 2800 RPM
Heater Type	Fin Heater
Heater Load	1.5 KW
Qty. of Heater	04 Nos.
Heating Control	By Panel, Through PID (1 Nos.)
Air Flow	By High Speed Blower
Connected Load	Motor (1 HP / 0.75 KW) Heater (4 KW)
Operated By	By Panel
Machine Weight	120 Kgs Approx.





## UPGRADE ONLINE PIPE CLEANING MACHINE

- Heavy Structure for less vibrations.
- Heavy duty Caster wheels for easy movement of machine.
- Additional wastage box to keep wastage in one place.
- Top side cooling fan to remove heat from inside the machine.
- UU Type Linear bearings and Hard Chrome rods for easy linear motion of heating blades.
- Massive heater blades to store more heat for a long time.
- High Temperature will be achieving by Pencil Heaters.
- Speed of machine can be change through potentiometer.
- Front side Acrylic glass door to prevent accidents.
- Proper Guide for chain conveyor with combination of Chain and Sprockets.
- Speed Reduction and high torque is achieving by Inline Helical Gearbox
- Storage Box for Pipe Storage.



Main Structure Body	Made of Heavy M.S. Sheet, 4mm
Machine Output	30 to 40 Pipes / Minute (Heavy Denier / FIBC Fabric) 35 to 45 Pipes / Minute (Normal Denier / Small Bags) 40 to 50 Pipes / Minute (Natural Tapes)
Wastage Cut Through	Heating Blade
Qty. of Heating Blade	1 Big, 2 Small (500 + 250 + 250)
Material Of Heating Blade	EN 31
Heater Type	Pencil Heater
Qty. of Heater	1 Big, 2 Small (500 + 250 + 250)
Ideal Pipe Diameter	Various size of Pipes can Cut
Diameter with Wastage	Up to 55mm
Machine Speed Adjustment	By Drive
Heating Blade Height Adjustment	By Linear Bearing
Motor Running Indication	By Tower Light
Front side Safety	Heavy Acrylic Glass Door (Big Vision)
Movement of Machine	By Heavy duty Caster Wheel
Motor	1 HP, 1440 RPM
Connected Load	Motor (1 HP / 0.75 KW) Heater (3 + 1.5 + 1.5 = 6 KW)
Operated By	By Panel



## HYDRAULIC BALE PRESS FOR WOVEN BAGS

Machine Structure made of Heavy Structural Steel Plates 8mm/10mm/12mm/16mm/25mm, Square & Rectangular Section Tubes

Main motors of ISI Make  
 Speed : 1440 RPM  
 Mounting Side : Vertical Side  
 Motor Rating : IP55  
 Motor HP : 3HP/5HP/7.5HP/10HP/12.5HP

Hydraulic Pump Reputed Make  
 Mounting Side : Vertical Side  
 Pump Type : Tandem

Pressure Control Module Make "POLYHYDRON"  
 Tested on : 210 Bar

Pressure gauge 0 – 250 bar / 0-400 bar  
 Back Side Clam Mount



Capacity	10 Ton	20 Ton	40 Ton	60 Ton
Main Structure Plate	8mm	8mm	10mm	14mm
Cylinder Mounting Plate	8mm	16mm	20mm	25mm
Pillar	Box Pipe 100 X 50 X 5mm		Box Pipe 100 X 100 X 5mm	
Platform Size (mm)	600 X 800	1200 X 800	1500 X 1000	
Pressing Material	Woven Bags			
Pressure (Kg/cm <sup>2</sup> )	100	120		
Cylinder Size	100 – 70 - 900	120 – 90- 1000	100 – 140 - 1200	120 – 160 – 1200
Daylight Gap (mm)	1050	1150	1450	1450
Minimum Gap (mm)	150			
Electric Motor (HP)	5	7.5	10	12.5
Cycle Time (Sec)	20 - 25	25 - 30	30 - 35	30 - 35
Guide Rod Details	Dia. 40mm, Length 1250mm, 2 Nos.		Dia. 60mm, Length 1450mm, 4 Nos.	
Pump Type	Hydraulic Gear Pump		Hydraulic Vane Pump	
Control System	By Manually	By Panel (Start, Stop, Up, Down, Emergency)		
Oil Required	100 LTR	150 LTR	200 LTR	200 LTR



## HYDRAULIC BALE PRESS FOR FIBC / JUMBO BAGS

Four open guide pillars + guides rod for support of moving platen resulting in perfect alignment and safety of the hydraulic seals.

Hydraulic Double acting single cylinder, Pipe made of ST3 material fully Honed pipe, Piston rod made of EN8 material with Hard chrome.

Slits on both axes provided for the perfect bale strapping.

Three Sides cover with Heavy duty M.S. Box pipes with S.S. Cladding.

At Front side Heavy duty gate with S.S. Cladding to remove bale.

(2 Gates on each side.)

To remove bale easily, Pusher Cylinder will be at the back side of machine.

The moving Platens can be stopped by means of height adjustable Limit switches on both sides, i.e. upwards & downwards.

Pressure Control Module is providing for overpressure safety.



<b>Capacity</b>	<b>120 Ton</b>
<b>Main Structure Plate</b>	20mm
<b>Cylinder Mounting Plate</b>	40mm
<b>Pillar</b>	Box Pipe 150 X 150 X 6mm
<b>Platform Size (mm)</b>	1150 X 950
<b>Pressing Material</b>	FIBC / Jumbo Bags
<b>Pressure (Kg/cm<sup>2</sup>)</b>	120
<b>Cylinder Size</b>	140 – 300 - 1600
<b>Daylight Gap (mm)</b>	2000
<b>Minimum Gap (mm)</b>	400
<b>Electric Motor (HP)</b>	25
<b>Cycle Time (Sec)</b>	40 - 45
<b>Guide Rod Details</b>	Dia. 40mm, Length 1250mm, 2 Nos.
<b>Pump Type</b>	Hydraulic Vane Pump
<b>Control System</b>	By Panel
<b>Oil Required</b>	300 LTR



## HYDRAULIC BALE PRESS FOR PLASTIC/PAPER WASTE

Four open guide pillars + guides rod for support of moving platen resulting in perfect alignment and safety of the hydraulic seals.

Hydraulic Double acting single cylinder, Pipe made of ST3 material fully Honed pipe, Piston rod made of EN8 material with Hard chrome.

Provided Front Side Heavy Duty gate for easy removing bale from the chamber.

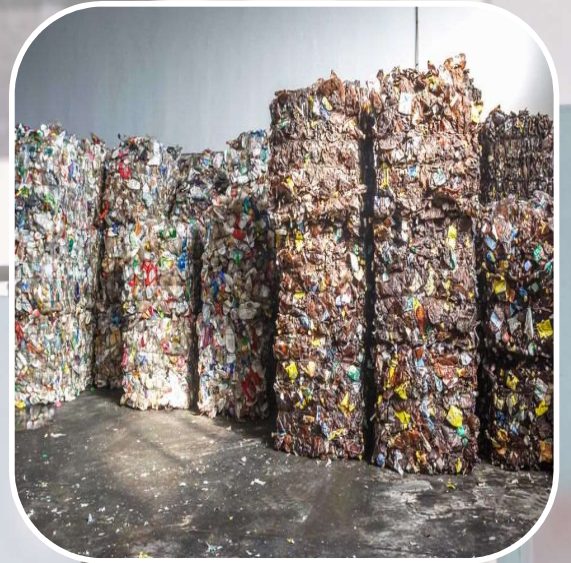
Other three side cover with heavy duty plates for perfect baling of wastage

The moving Platens can be stopped by means of height adjustable Limit switches

Pressure relief valve is providing for overpressure safety.

Available in a wide range of platform sizes, height & tonnage.

Warranty against proper usage on all machine parts (EXCEPT ELECTRICAL ITEMS) for 1 year from the date of delivery.



Capacity	10 Ton	20 Ton
Main Structure Plate	8mm	8mm
Cylinder Mounting Plate	8mm	16mm
Pillar	Box Pipe 100 X 50 X 5mm	
Platform Size (mm)	600 X 800	600 X 800
Pressing Material	Plastic / Paper Waste	
Pressure (Kg/cm <sup>2</sup> )	100	120
Cylinder Size	100 – 70 - 900	120 – 90- 1000
Daylight Gap (mm)	1050	1150
Minimum Gap (mm)	150	
Electric Motor (HP)	5	7.5
Cycle Time (Sec)	20 - 25	25 - 30
Guide Rod Details	Dia. 40mm, Length 1250mm, 2 Nos.	
Pump Type	Hydraulic Gear Pump	
Control System	By Manually	By Panel
Oil Required	100 LTR	150 LTR

**HYDRAULIC CHEESEPIPE STRAIGHTENER**

One of the most common problems in tape line plant is bended pipe in winder section. So to overcome this problem we are introducing Hydraulic cheese pipe straightener.

This machine will help you to remove bends from cheese pipe surface by hydraulic cylinder.

<b>Hydraulic Cylinder</b>	01 Nos. Vertical Mounting
<b>Working Pressure</b>	60 Kg/cm <sup>2</sup>
<b>Structure</b>	Heavy Gauge M.S. Sheet
<b>Cylinder Stroke</b>	300mm
<b>Cylinder Size</b>	30 X 63 X 300
<b>Cycle Time</b>	35 Sec.
<b>Motor Capacity</b>	1 HP, 3 Phase
<b>Oil Require</b>	27 Ltr. (Grade 68 no.)
<b>Operation</b>	By Hand Lever
<b>Pump type</b>	Gear pump, 3.4 LPM

**Address:**

134, Gajanan Industrial Hub - 2, B/H Matrix Plaza Complex,  
Nr. Vinzol Patiya Crossing Road, Phase - 4, GIDC Vatva,  
Ahmedabad-382445., Gujarat (INDIA).

Email ID: [mechheart03@gmail.com](mailto:mechheart03@gmail.com)

Contact No.: +91 90548 80337, +91 90333 72386

Web Site: [www.mech-heart.com](http://www.mech-heart.com)